

Tumor microenvironment

Cellular component:

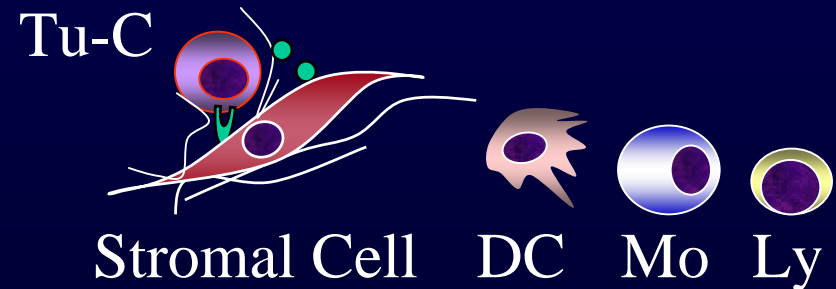
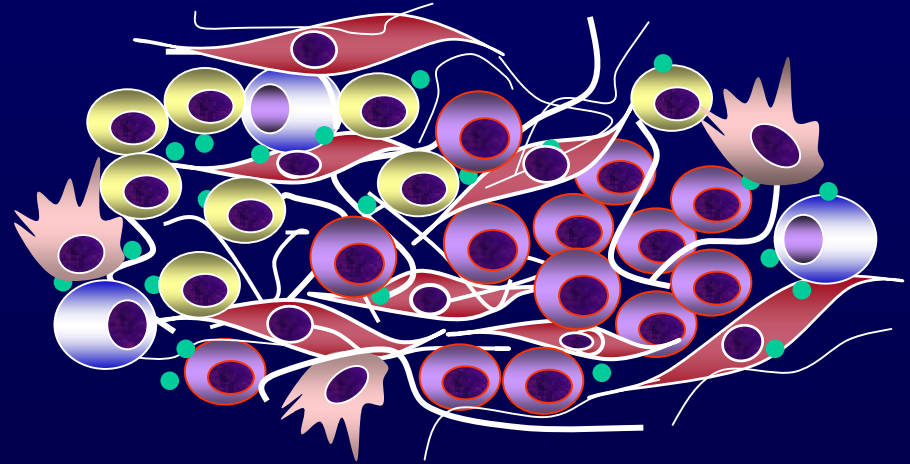
Stromal cells, lymphocytes, macrophages, dendritic cells

Matrix component:

Collagen, fibronectin, hyaluronan

Soluble factors:

Cytokines, growth factors

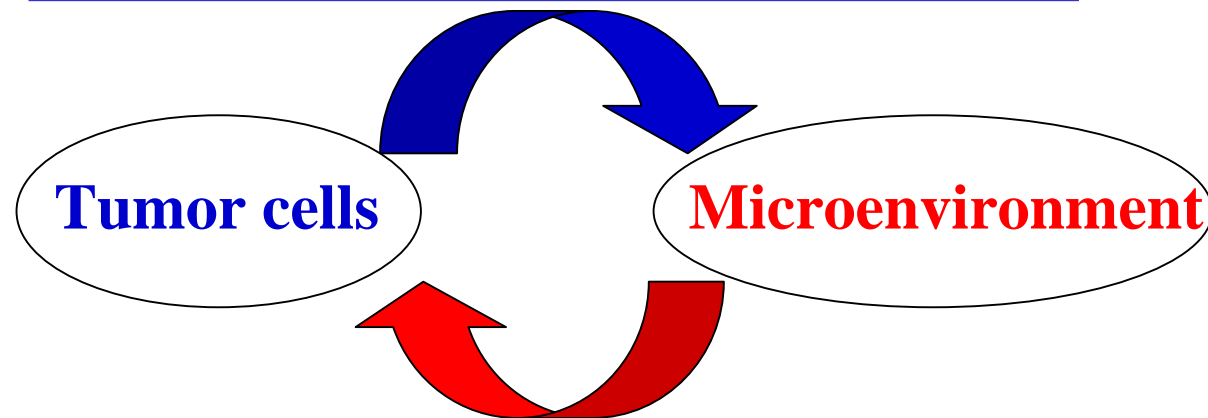


A major role in:

Tumor development, Tumor progression, Drug Resistance.

Cross Talk Between the Leukemic B Cells & Bone Marrow Microenvironment

***Hairy cell Leukemia:
induction of bone marrow fibrosis**



***B-cell Chronic lymphocytic:
inhibition of apoptosis**